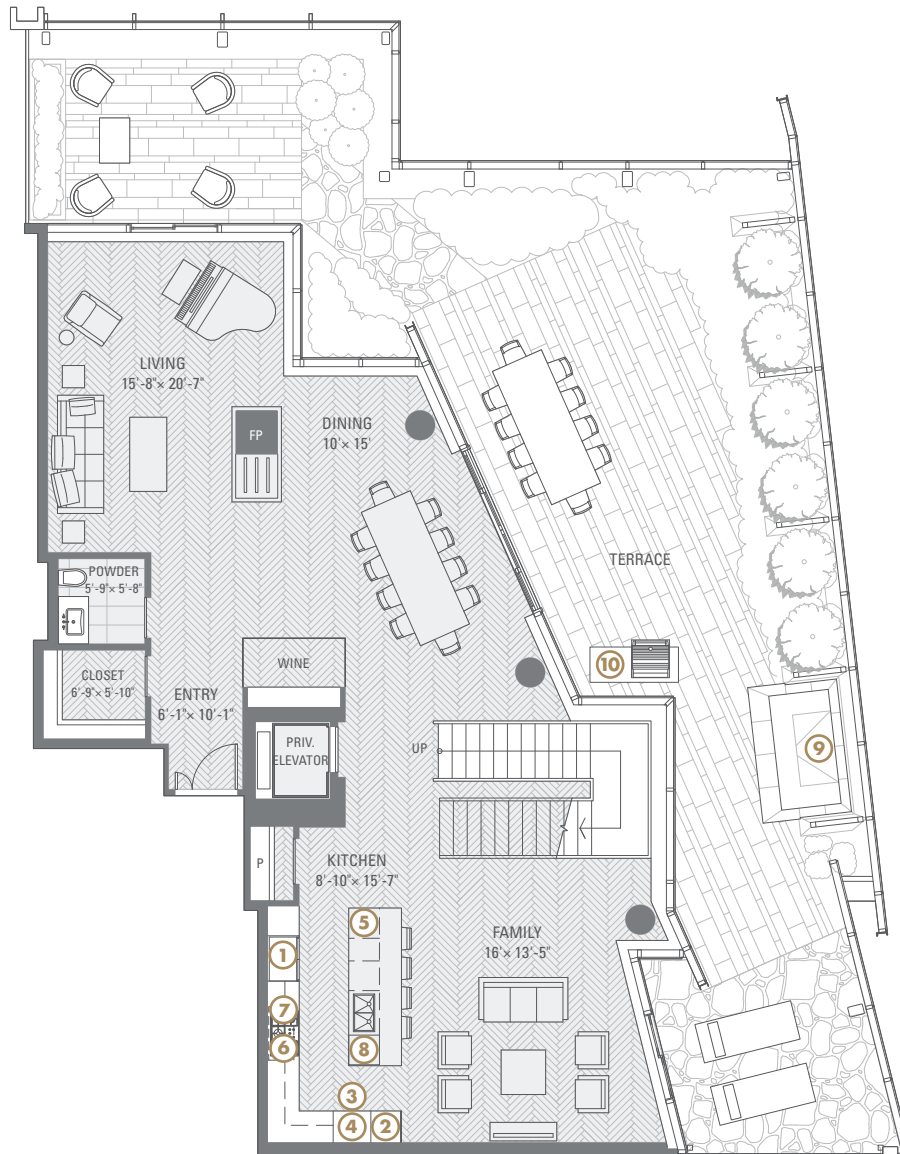


# PENTHOUSE 6501

3 BEDROOM, FAMILY  
3,415 SQ FT

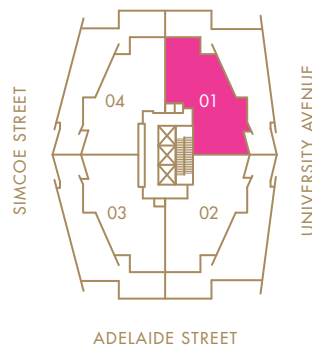
LOWER LEVEL  
1,743 SQ FT

TERRACE  
1,565 SQ FT

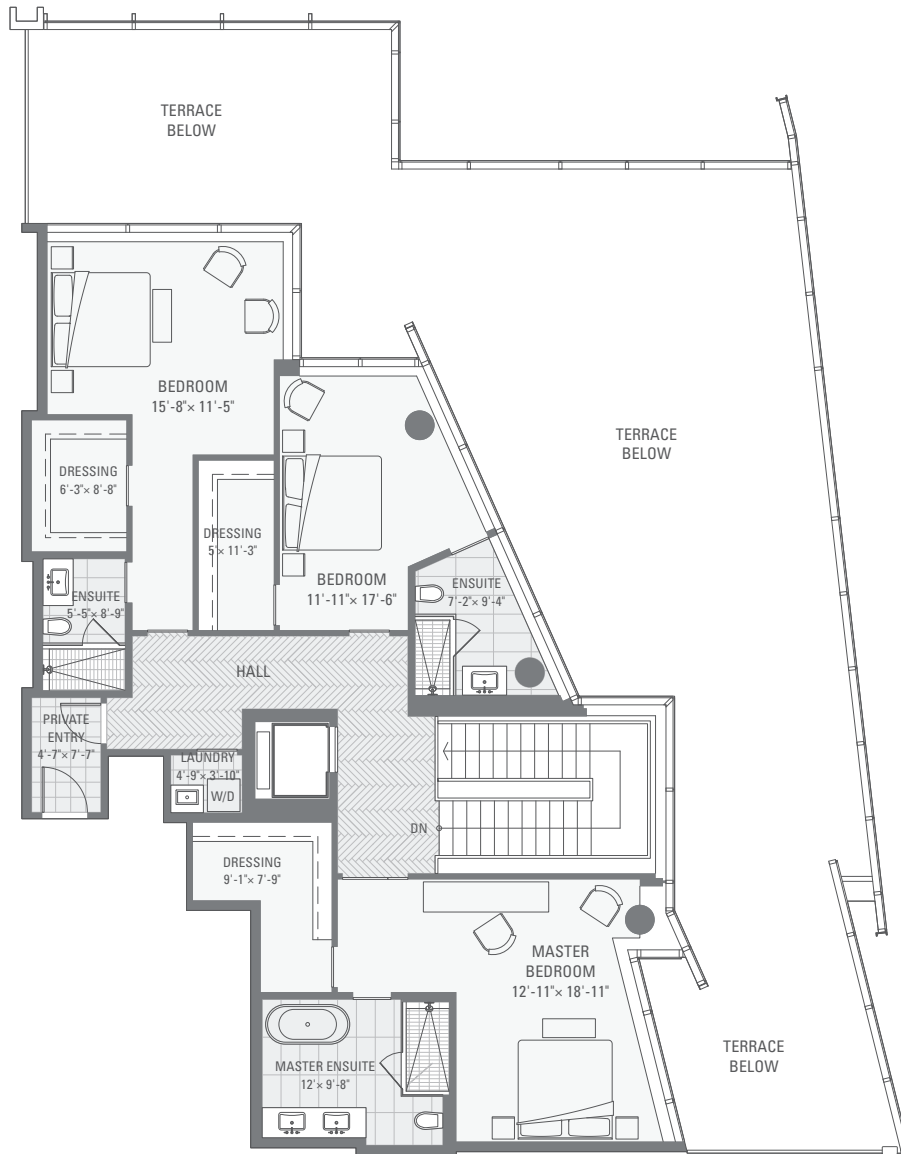


- ① SUB-ZERO INTEGRATED FRIDGE & FREEZER
- ② MIELE BUILT-IN COFFEE MAKER AND WARMING DRAWER
- ③ MIELE SPEED OVEN ABOVE
- ④ MIELE WALL OVEN *BELOW*
- ⑤ SUB-ZERO WINE FRIDGE
- ⑥ MIELE GAS COOKTOP
- ⑦ MIELE VENT HOOD
- ⑧ MIELE INTEGRATED DISHWASHER
- ⑨ JACUZZI
- ⑩ GAS BBQ WITH BASALT STONE COUNTERTOP

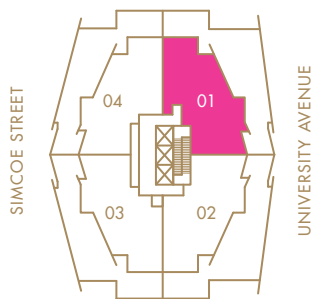
## FLOOR 65



UPPER LEVEL  
1,672 SQ FT



FLOOR 66



DIMENSIONS, SIZES, SPECIFICATIONS, LAYOUTS AND MATERIALS ARE APPROXIMATE ONLY AND SUBJECT TO CHANGE WITHOUT NOTICE. E. & O. E.

ADELAIDE STREET

# SPECIFICATIONS

## KITCHENS

- Boffi Italian walnut kitchen and island with under cabinet lighting
- Corian countertop & backsplash
- Miele built-in coffee maker with warming drawer
- Miele 24" speed oven
- Miele 24" steam oven
- Miele 30" wall oven
- Miele integrated dishwasher
- Miele gas cooktop
- Miele vent hood
- Sub-Zero integrated fridge & freezer
- Sub-Zero under counter wine fridge
- Kohler stainless steel double sink
- Brizo kitchen faucet with smart touch technology
- Pantry with custom shelving
- White oak chevron flooring

## WINE ROOM

- Bronze glass enclosed walk-in wine room with white oak smoked finish wood shelving
- White oak chevron flooring

## LIVING ROOM

- Triple sided gas fireplace with bookmatched Calacatta stone finish and Basalt stone hearth
- Walk-out to terrace
- White oak chevron flooring

## FAMILY ROOM

- Located off the kitchen with walk-out to terrace
- White oak chevron flooring

## DINING ROOM

- Separate dining room with walk-out to terrace
- White oak chevron flooring

## FOYER

- Poliform walnut walk-in closet system
- Built-in touch screen security panel\*
- White oak chevron flooring

## LAUNDRY ROOM

- Miele stacked washer/dryer
- Cabinetry with stainless steel sink, faucet and pull-out handspray
- Porcelain tile flooring

## MASTER BEDROOM

- Poliform walnut walk-in closet system
- Ensuite washroom
- White oak chevron flooring

## MASTER ENSUITE

- Boffi walnut vanity cabinetry
- Calacatta marble vanity countertop & bookmatched walls
- Calacatta marble heated flooring
- Duravit wallmounted toilet
- Italian Cabano wall mounted faucets
- Kohler undermount porcelain double sinks
- Kohler DTV shower control system with water tile rain shower panel, wall-mounted showerheads and body sprays
- Dornbracht MEM tub filler with cascade spout and hand shower
- Duravit Starck freestanding bathtub
- Dornbracht bathroom accessories
- Mirror with integrated lighting and TV

## SECOND BEDROOM

- Poliform walnut walk-in closet system
- Ensuite washroom
- White oak chevron flooring

## ENSUITE 2

- Boffi walnut vanity cabinetry
- Calacatta marble vanity countertop & bookmatched walls
- Calacatta marble heated flooring
- Duravit wall-mounted toilet
- Italian Cabano wall mounted faucets
- Kohler undermount porcelain double sinks
- Kohler DTV shower control system, wall mounted shower head & body sprays
- Mirror with integrated lighting

## THIRD BEDROOM

- Poliform walnut walk-in closet system
- Ensuite washroom
- White oak chevron flooring

## ENSUITE 3

- Boffi walnut vanity cabinetry
- Calacatta marble vanity countertop & bookmatched walls
- Calacatta marble heated flooring
- Duravit wall-mounted toilet
- Italian Cabano wall mounted faucets
- Kohler undermount porcelain sink
- Kohler DTV shower control system, wall mounted shower head & body sprays
- Mirror with integrated lighting
- Feature window

## POWDER ROOM

- Boffi walnut vanity cabinetry
- Travertine flooring, walls and countertop
- Kohler undermount porcelain sink
- Duravit toilet
- Mirror with integrated lighting

## TERRACE

- Basalt stone pavers on terrace
- Gas BBQ with Basalt stone countertop and under counter fridge
- Jacuzzi
- Landscaping with irrigation system

## ADDITIONAL FEATURES

- Private internal elevator within suite
- Triple car garage with storage
- 11' smooth ceilings on main level, 10' ceilings with 11' coffers on upper level\*
- Motorized sun shades throughout with additional blackout shades in bedrooms
- Built-in ceiling speakers
- Glass & steel staircase with white oak handrails
- Overheight baseboards throughout