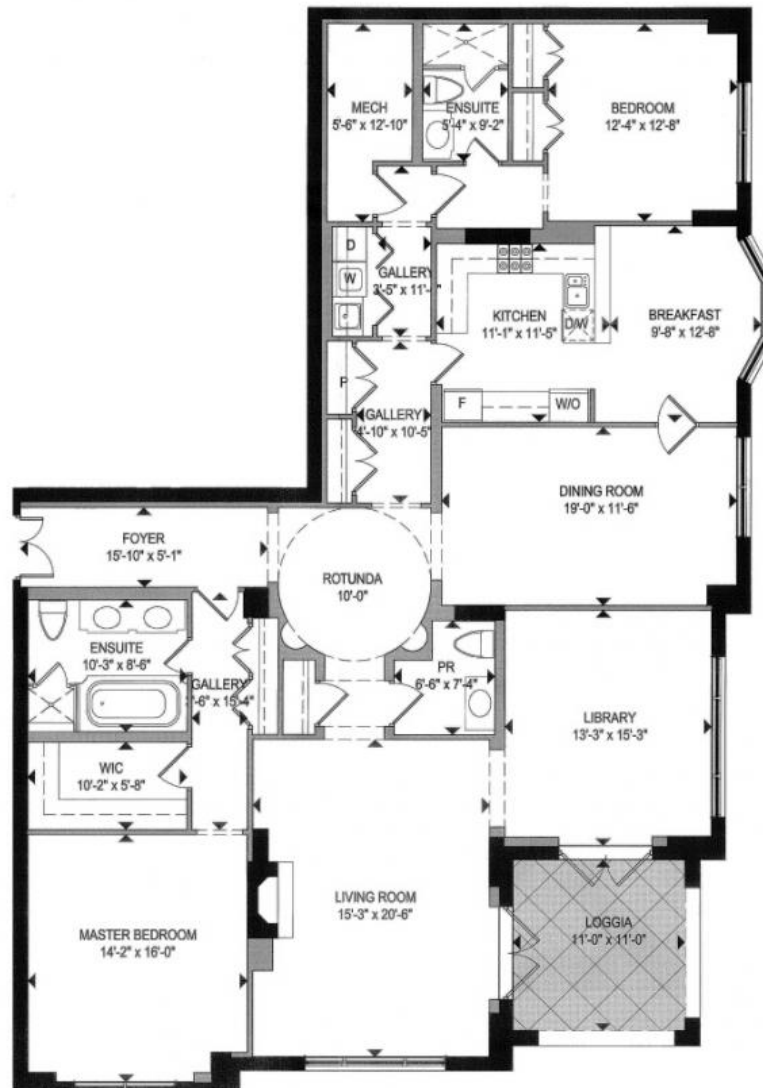


One St. Thomas: Residence A

Size: 2,497 Sq.Ft. | Bedroom: 2+1 | Bathroom: 2.5 | Exposure: Southeast



DYLANDONOVAN

Direct: 416-317-4040 | Office: 416-925-9191 | Email: dylan@dylandonovan.ca

Chestnut Park Real Estate Limited, Brokerage