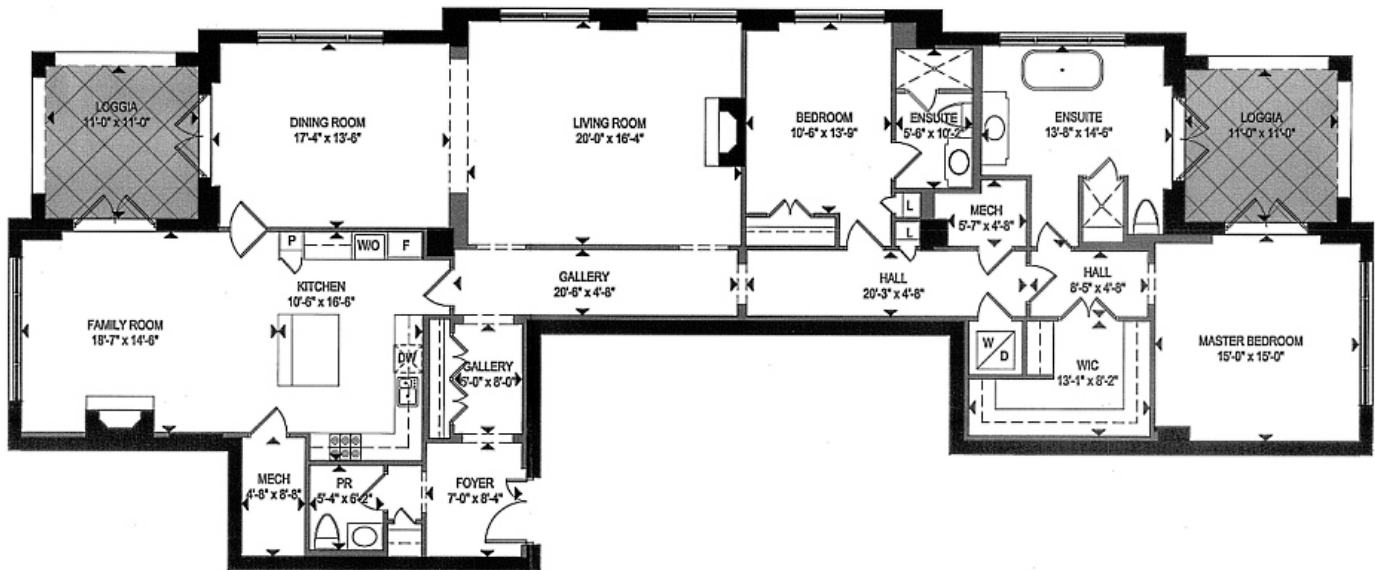


One St. Thomas: Residence C

Size: 2,638 Sq.Ft. | Bedroom: 2 | Bathroom: 2.5 | Exposure: North/East/West



DYLANDONOVAN

Direct: 416-317-4040 | Office: 416-925-9191 | Email: dylan@dylandonovan.ca

Chestnut Park Real Estate Limited, Brokerage